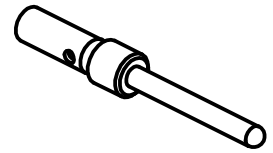


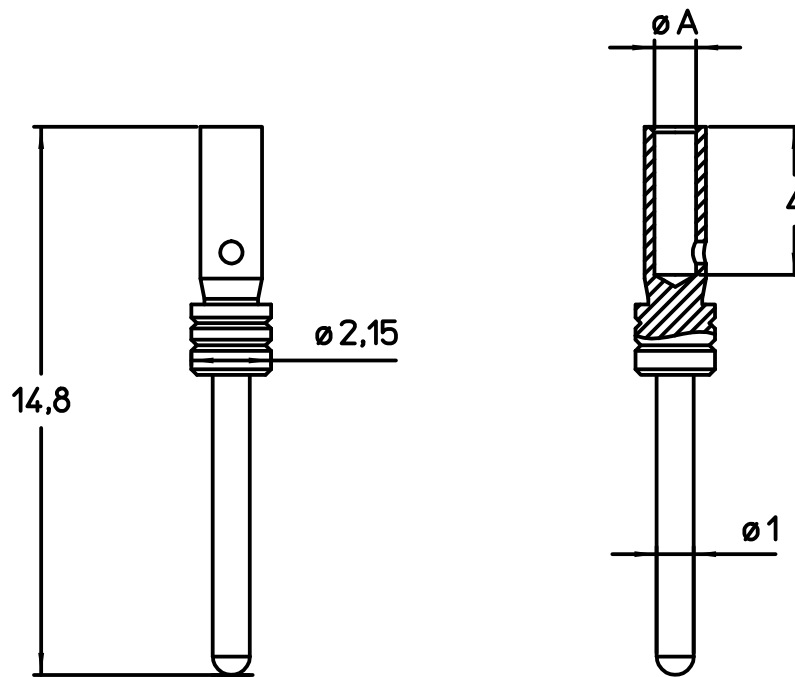
1

2



A

A



B

B

All rights reserved

Diritti riservati

PART NUMBERS					eA mm	WIRE GAUGE		IDENTIFICATION	STRIPPING LENGTH mm
SILVER PLATED	JEI GOLD PLATED	GOLD PLATED	SPECIAL GOLD PLATED	HIGH NUMBER of MATINGS (HNM)		mm ²	AWG		
CIMA 0.2	CIMJD 0.2	CIMD 0.2	CIM2D 0.2	RIMD 0.2	0,64	0,08-0,21	28-24		4,0
CIMA 0.3	CIMJD 0.3	CIMD 0.3	CIM2D 0.3	RIMD 0.3	0,90	0,13-0,33	26-22		
CIMA 0.5	CIMJD 0.5	CIMD 0.5	CIM2D 0.5	RIMD 0.5	1,12	0,33-0,52	22-20		
CIMA 0.7	CIMJD 0.7	CIMD 0.7	CIM2D 0.7	RIMD 0.7	1,30	0,52-0,75	20-18		

C

C

	04/05/20		Added new part numbers : JEI, SPECIAL GOLD PLATED and HNM
	27/11/17		Added : CIMA 0.7 - CIMD 0.7
	06/05/16		Added new part numbers : SILVER PLATED
REV.	DATE	SIGNATURE	

Dimensions
in mm

Simplified representation with dimensions without tolerance

Original Size	A4
Date	04/05/20
Sign.	Pitasi

CIM XX
Male crimp contact 5A

Scale
5:1



1

2